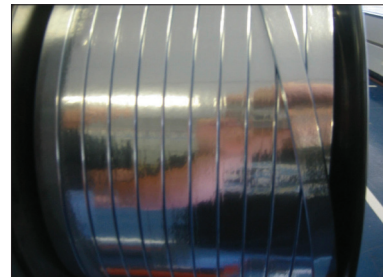


### Loading Manual Reels on Reel Stands

To ensure that the foam makes contact with the liner stripper drive wheel, load the spacer one of two ways:

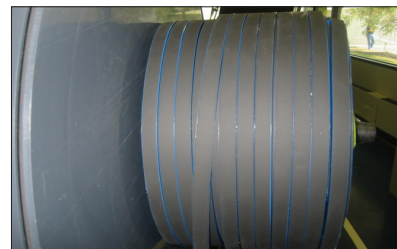
For reels with the vapor barrier coiled outward  
(vapor barrier is visible on top of the spacer)



...the feed is from the top of the reel.



For reels with the vapor barrier coiled inward  
(vapor barrier on the bottom and foam on top)



...the feed is from the bottom of the reel.



(\*Note: These photos are shown without the protective reel lid. Under normal operation, reel lids must be used.)

## Loading Manual Reels on Reel Stands

Rev. #	Revisions Made	Rev. Date
2	Formatting	06-11
1	Revision date	09-11-08